



Organised by
Hong Kong China Dragon Boat Association



Subvented by
Leisure & Cultural Services Department

6th Hong Kong Long Distance Dragon Boat Championships

15 November 2015 (Sunday)

Bulletin

Revised on 15th October 2015

We are pleased to announce that the 6th Hong Kong Long Distance Dragon Boat Championships which is organized by Hong Kong China Dragon Boat Association and subvented by Leisure and Cultural Services Department, the Championships will be held on 15th November 2015, Sunday at Shing Mun River, HKDBA Training Centre, On King Street, Shatin. Details are as follows:-

Date : 15 November 2015, Sunday

Time : 10am – 3pm

Venue : Shing Mun River, HKDBA Centre, On King Street, Shek Mun, Shatin

Distance : 10km / 5km

Enrollment deadline : 26th October 2015, Monday

As indicated by postmark with submission of completed entry form, all required documents and entry fee. No refund after enrollment is confirmed by HKCDBA. Payment receipt will be distributed at Team Managers' meeting.
(Success entry rest with the total number of participating teams)

**Administration
charge for alteration
and incomplete
application:**

<u>Charge</u>	<u>Item</u>
\$200/participant per event	Submit or change personal information from 27 th October 2015 to 11 th November 2015. <u>Changes will not be accepted from 12 November 2015</u>

Race Categories

Categories	Open	Women	Mixed	Senior (O40)	Junior (U23)
Race Course	10km (Standard Boat)				
<div>➤ Maximum 10 male paddlers for the Mixed Championship.</div> <div>➤ Only Standard boat with 20 paddlers (including Drummer and Steersman) are available in all categories</div> <div>➤ The quota for each category is 20 boats; enrollment will be accepted on first come first served basis.</div> <div>➤ Maximum 6 paddlers reverse for each boat.</div>					



Organised by
Hong Kong China Dragon Boat Association



Subvented by
Leisure & Cultural Services Department

6th Hong Kong Long Distance Dragon Boat Championships

15 November 2015 (Sunday)

Categories	Open	Women	Mixed	Senior (O40)	Junior (U23)
Race Course	5 km (Small Boat)				
<div>➤ Maximum 6 male paddlers for the Mixed Championship.</div> <div>➤ Only Small boat with 12 paddlers (including Drummer and Steersman) are available in all categories</div> <div>➤ The quota for each category is 20 boats; enrollment will be accepted on first come first served basis.</div> <div>➤ Maximum 6 paddlers reverse for each boat.</div>					

Age

1. All participants should be aged 12 or above as of 1 June 2015.
2. Senior O40: All paddlers should be aged above 40 as of 1 June 2015. (Drummer and Steersman are not included)
3. Junior U23: All paddlers should be aged 23 and under at 1st June 2015. (Drummer and Steersman are not included)

Race rules and regulation

It will be run in accordance to the IDBF Rules and Regulations and HKCDBA Hong Kong Amendments (4rd Edition) (revised version released on 1 Mar 2015). Please download the race rules and regulation from HKCDBA website <http://www.hkdba.com.hk>.

**** All team managers and participants should be familiar with the race rules and regulations.**

Entry Fee

Open / Woman / Mixed / Senior (O40)	Standard Boat	Small Boat
2015-16 Voting/Ordinary Member	HKD\$1200 / team	HKD\$800 / team
Non-Voting Member	HKD\$1500 / team	HKD\$1000 / team
Junior (U23)		
2015-16 Voting/Ordinary member	HKD\$800 / team	HKD\$500 / team
Non-Voting Member	HKD\$1000 / team	HKD\$700 / team

*** Team(s) organized by voting members should be with their registered member title existed in the participating team name.**



Organised by
Hong Kong China Dragon Boat Association



Subvented by
Leisure & Cultural Services Department

6th Hong Kong Long Distance Dragon Boat Championships

15 November 2015 (Sunday)

Race Format

To be announced at the team managers' meeting.

Awards

Trophy and 26 Medals will be awarded to the Champion, 1st runner-up and 2nd runner-up of each standard boat category.

Trophy and 18 Medals will be awarded to the Champion, 1st runner-up and 2nd runner-up of each small boat category.

Arrangement under inclement weather

- 1) If typhoon signal No. 3 or above, red or black rainstorm warning signal is in force at 7am on the race day, all the races will be cancelled. Entry fee would not be refunded.
- 2) If thunderstorm warning, typhoon signal No. 1, amber rainstorm warning signal is in force on the race day, all teams shall report on time. Cancellation or delay of races is subject to the final decision of organizing committee. All teams should obey the arrangement announced by organizing committee.
- 3) In case weather condition is getting worse during the races, the organizer reserves the right to cancel or postpone the race. Entry fee would not be refunded.



Organised by
Hong Kong China Dragon Boat Association



Subvented by
Leisure & Cultural Services Department

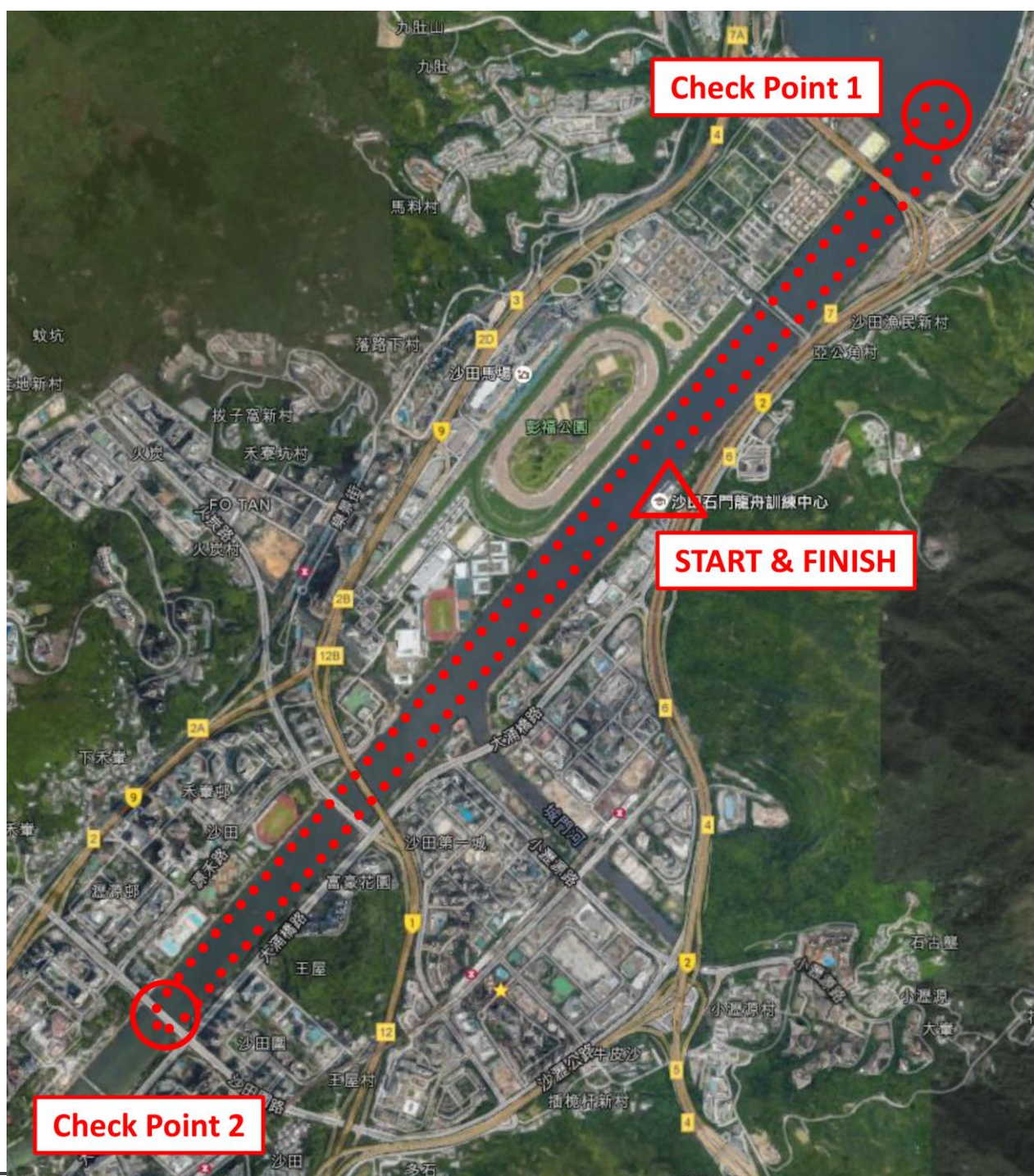
6th Hong Kong Long Distance Dragon Boat Championships

15 November 2015 (Sunday)

10 km Race Course Arrangement

Starting from the HKCDBA Centre, heading the direction towards to Tai Po and pass by “Check Point 1” and U-turn. Then, heading towards Sha Tin and pass by “Check Point 2” (Close to Sha Yin Bridge). Then, turn back to the HKCDBA Centre as the end.

10 km Race Course Route





Organised by
Hong Kong China Dragon Boat Association



Subvented by
Leisure & Cultural Services Department

6th Hong Kong Long Distance Dragon Boat Championships

15 November 2015 (Sunday)

5 km Race Course Arrangement

Starting from the HKCDBA Centre, heading the direction towards to Tai Po and pass by “Check Point 1” and U-turn. Then, heading towards Sha Tin and pass by “Check Point 2” (Seafood Floating Restaurant) and turn back to the HKCDBA Centre as the end.

5 km Race Course Route





6th Hong Kong Long Distance Dragon Boat Championships

15 November 2015 (Sunday)

Race by-law

- 1) There is no limitation on number of entries of each organization.
- 2) Each paddler cannot represent different teams (sub-teams under the same team's name (Team A, Team B) are regarded as different teams) in the same category.
- 3) Teams must appoint a Team manager stay in marshalling area and communicate with staff during the race.
- 4) Coach can take the position of drummer or steersman. It should be marked on the crew registration form.
- 5) Substitutions for paddlers, drummer and steersman should meet the entry requirement of the categories participated.
- 6) Drummer and steersman should be Women in all Women Categories.
- 7) Category with less than 3 participating teams will be cancelled.
- 8) **All participants should be holders of 2015-2016 HKCDBA registered athlete cards and present their ORIGINAL HKCDBA athlete Card for checking on the race day.** For those who cannot present the HKCDBA athlete cards for any reasons, replacement with payment (HK\$100@ card) should be made on the spot.
- 9) Participants may use their own paddles which must be in accordance to 5.2 Amendments of HKCDBA Competition Regulations and Rules of Racing.
- 10) HKCDBA organizing committee reserves the right to refuse any entry into the races at its sole discretion.
- 11) Any team who severely contravenes rules and regulations or disciplinary code will be disqualified, and are not entitled for any awards.
- 12) In case of discrepancy between Chinese and English information in this Bulletin, Chinese version shall prevail.

Enrollment Procedure

Date	Items
26 October 2014, Monday	Enrollment deadline
15 November 2015, Sunday Time: 08:30 am Venue: Hong Kong China Dragon Boat Association Training Center	Team managers' meeting (Race rules and regulations, race format and all the event arrangement will be announced.) All team managers should attend this meeting. Prior notice will not be issued. Those absentees' opinion on all the matters announced at the meeting and race appeal will not be accepted.
15 November 2015, Sunday	Race day



Organised by
Hong Kong China Dragon Boat Association



Subvented by
Leisure & Cultural Services Department

6th Hong Kong Long Distance Dragon Boat Championships

15 November 2015 (Sunday)

Enrollment method

Please send the following documents to HKCDBA Secretariat by email / fax / post before deadline:

- 1) Completed “(1) Entry Form & (2) Crew Registration Form” ;
- 2) **Entry Fee:**
 - a. Crossed cheque; or
 - b. Direct deposit to **HSBC A/C 600-650-568-003** (Please clearly state the TEAM NAME.)
- 3) Athlete Registration & Admin. charge for changing information:
 - a. Crossed cheque; or
 - b. Direct deposit to **HSBC A/C 600-650-568-002** (Please clearly state the TEAM NAME.)

Points to note

1. Please make the fees payable to “Hong Kong China Dragon Boat Association”.
2. Write down your team name and participated categories at the back of cheque or deposit slip.
3. Retain a copy of the cheque or deposit slip for your own record.
4. It will be deemed as outstanding payment if there is problem banking in your cheque.
5. Postal address: Room 1032, Olympic House, 1 Stadium Path, So Kon Po, Causeway Bay.

*** All personal data collected will be solely used for the purpose of arranging this event. Please contact the Association should you prefer to get back any documents submitted within one month upon the completion of the event else respective data will be permanently destroyed from the files.*

Enquiry

Hong Kong China Dragon Boat Association

Tel: (852)2504 8332

Website: www.hkdba.com.hk

Fax: (852)2577 1873

Email: hkdba@hkolympic.org



Organised by
Hong Kong China Dragon Boat Association



Subvented by
Leisure & Cultural Services Department

6th Hong Kong Long Distance Dragon Boat Championships

15 November 2015 (Sunday)

(1) Entry Form

Team name	(Chi)	(Eng)
Name of club/team/ organization	Member No. (If applicable)	
Address		
Contact person	Phone number	
	emergency contact	
Email	person & phone number	

Participated category

	Open	Woman	Mixed	Senior (O40)	Junior (U23)
Standard Boat (20 max.)					
Small Boat (12max.)					

Declaration

1. We, the club / team / organization agree to abide by the constitution, by-law, race rules and regulations of the Association, which may refuse to accept this application without giving any reason therefore. We warrant that the information supplied aforesaid are true, correct and complete. We declare that all the participants can swim for at least 100 meters. All of them are healthy, physically fit, and suitable to participate in the dragon boat races. We understand that we join the training or races at our own risk. We also agree to discharge Hong Kong China Dragon Boat Association from any responsibility in the event of injury, death or loss of property incurred, as a consequence of or while traveling to and from the venue(s) if the cause of injury, death or loss of property is due to our own negligence or inadequacy in health and fitness.
2. We, the club / team / organization hereby certify that we have obtained the prior approval from parent(s) / legal guardian(s) of each member of the team participating in this race under 18 years old and we take full responsibility for the care and safety of each of our members. We further confirm our acceptance of the conditions set out in the above paragraph.
3. Hong Kong China Dragon Boat Association has purchased Public Liability and Personal Incident Insurance packages which maximum compensation is \$20,000,000 and \$200,000 for accidental death respectively. I will purchase extra insurance coverage myself if necessary. I agree that the information provided to be used by Hong Kong China Dragon Boat Association to process this application

Signature _____ Stamp of club / company / school _____
Name _____ Date _____



Organised by
Hong Kong China Dragon Boat Association



Subvented by
Leisure & Cultural Services Department

6th Hong Kong Long Distance Dragon Boat Championships

15 November 2015 (Sunday)

(2) Crew Registration Form

Team name (Chi) _____ (Eng) _____

Category	Open	Women	Mixed	Senior (O40)	Junior (U23)
Standard Boat 10km(20 max.)					
Small Boat 5km (12 max.)					

* One Crew Registration Form for one category only, please photocopy if necessary

Information of participants:

	Full Name in English	Gender	HKID first 4 digits
Team Manger			
Coach			

	Please ✓ for position				Full Name in English	Gender	Athlete Registration No.
	Drummer	Steersman	Paddler	Reserve			
1							
2							
3							
4							
5							
6							
7							
8							
9							
10							
11							
12							
13							

